



# RESOPAL SpaStyling®

The integrated interior design  
concept for individual bathrooms

 **RESOPAL®**



---

## ORIGINAL **RESOPAL**. INSPIRING DESIGN SINCE 1930.

As an industry pioneer, **RESOPAL**® has become synonymous with high-pressure laminates of enduring quality. **RESOPAL** laminates were first patented in 1930 and boast some of the hardest surfaces available.

Our **RESOPAL** SpaStyling® line now offers you an integrated concept for a new world of bathroom design, engineered for quality. Discover our high-performance portfolio of long-lasting products that are quick and easy to install. Explore an unrivalled system of materials to fulfill all the demands of modern bathroom design.

---

# RESOPAL SpaStyling®

---

04	FREEDOM FOR INDIVIDUALISTS Preface
06	A SEAMLESS OASIS Interior design concept
08	THE MATERIAL OF THE FUTURE Advantages
10	A TOUCH OF LUXURY Inspiration
13	THE INTERSECTION OF SOPHISTICATION AND COLOUR Inspiration
14	PRODUCT SOLUTIONS FOR INTERIOR DESIGN Products
18	ALL-IN-ONE SYSTEM FOR MORE RELIABILITY Processing
19	PATTERNS
23	SURFACES



# FREEDOM FOR INDIVIDUALISTS







## RESOPAL SpaStyling®

Water has always been an extraordinary element, long serving as a source of tranquility, relaxation and recovery. Rooms dominated by water require special design to achieve these goals. After all, good bathroom and wet zone design is about much more than simply appearance. Quick, simple and cost-effective installation and ease of everyday cleaning and hygiene are top priorities, whether for new construction or renovation.

**RESOPAL SpaStyling®** offers you the material system to meet these demanding requirements, while allowing ample design freedom and integrated room concepts.



# A SEAMLESS OASIS



---

**RESOPAL SpaStyling® BOARD** – ultralight and large-format for fewer joints on the wall

---

**RESOPAL SpaStyling® FLOOR** – robust and durable, non-slip, pleasantly warm

---

**RESOPAL SpaStyling® SHOWER ELEMENTS** – with the same design theme as adjoining floor; processed in a single piece to be flush with the floor and thus barrier-free

---

**RESOPAL SpaStyling® ACCESSORIES** – adhesives and moulding: everything you need for quick, easy installation

---

---

## A WELLSPRING OF TRANQUILITY

**RESOPAL** SpaStyling® is a comprehensive design system. The individual elements of this perfectly matched ensemble are quick and easy to install. Give your bathroom a new look in no time at all. The noise and debris of installing and renovating are reduced to a minimum. Everything is perfectly coordinated and follows a consistent design scheme.

Combine large-format wall boards and durable flooring with barrier-free, zero-threshold shower elements. All elements are available in the same material, with the same pattern, for an effortlessly coordinated look. Transform your bathroom into an incomparable spa setting.



---

*Seamless: Large-format boards with no joints, matching flooring and covers in the same pattern generate a sense of spaciousness and harmony. Floor-flush shower systems provide walk-in convenience.*

---

---

# THE MATERIAL OF THE FUTURE

---

## RESOPAL SpaStyling® – SETTING TOMORROW'S TRENDS – TODAY

---



### Limitless variety for more individuality

Create an incomparable atmosphere in your bathroom. Mix styles and show your true colours. The **RESOPAL SpaStyling®** system provides you with a virtually limitless range of designs and patterns, appealing colours and striking structures in stone, wood, concrete and metal looks.

Be your own designer and create a bathroom with your own themes and images. Thanks to high-resolution digital printing, we can transfer your individual design onto **RESOPAL SpaStyling®** Boards. There are simply no limits to your creativity.



### A lifetime of uncompromising quality

Thanks to their robust original **RESOPAL SpaStyling®** HPL surfaces, ultralight **RESOPAL SpaStyling®** Boards are scratch-, scruff- and abrasion-proof, stain-resistant, non-fading, non-porous and thus absolutely hygienic and easy to clean.





### Unsurpassed hygiene in wet zones

With **RESOPAL SpaStyling®** Boards, creating a sense of well-being is about much more than just appearance. Walls covered with large areas of these boards have very few joints and thus hardly any place for grime to deposit, making low-maintenance, hygienic surfaces extremely efficient to clean.

Wall elements and floor-level shower systems from **RESOPAL SpaStyling®** are also inherently antibacterial: 99.9 % of tested bacteria are destroyed within just 24 hours.\*

\* More information at [www.resopal.de/antibacterial](http://www.resopal.de/antibacterial)



### Clean installation, minimal disruption

**RESOPAL SpaStyling®** can be cut and processed like wood – on-site, with conventional tools. Whether in new construction or renovation projects, **RESOPAL SpaStyling®** Board can be directly glued to existing tiles and other substrates. Its quick, easy and clean installation means hardly any debris and minimal disruption in the rooms.

# A TOUCH OF LUXURY



Wellness oasis in wood look - residential bathroom  
Photos: Christoph Hess Fotodesign, Darmstadt  
Patterns: 4490-WH Zebrano Nightfall,  
9417-HW Snow White, 4943-EM Empire Slate





*Small bathroom, big impact - residential bathroom*  
*Photos: Christoph Hess Fotodesign, Darmstadt*  
*Patterns: 4164-EM Country Oak, 4943-EM Empire Slate*







*A touch of nature - the new sanitary facilities in the Stadtgarten Congress Center in Schwäbisch Gmünd, Germany  
Photos: Christoph Hess Fotodesign, Darmstadt  
Patterns: 4164-EM Country Oak, 9429-HW Parrot*

---

# THE INTERSECTION OF SOPHISTICATION AND COLOUR

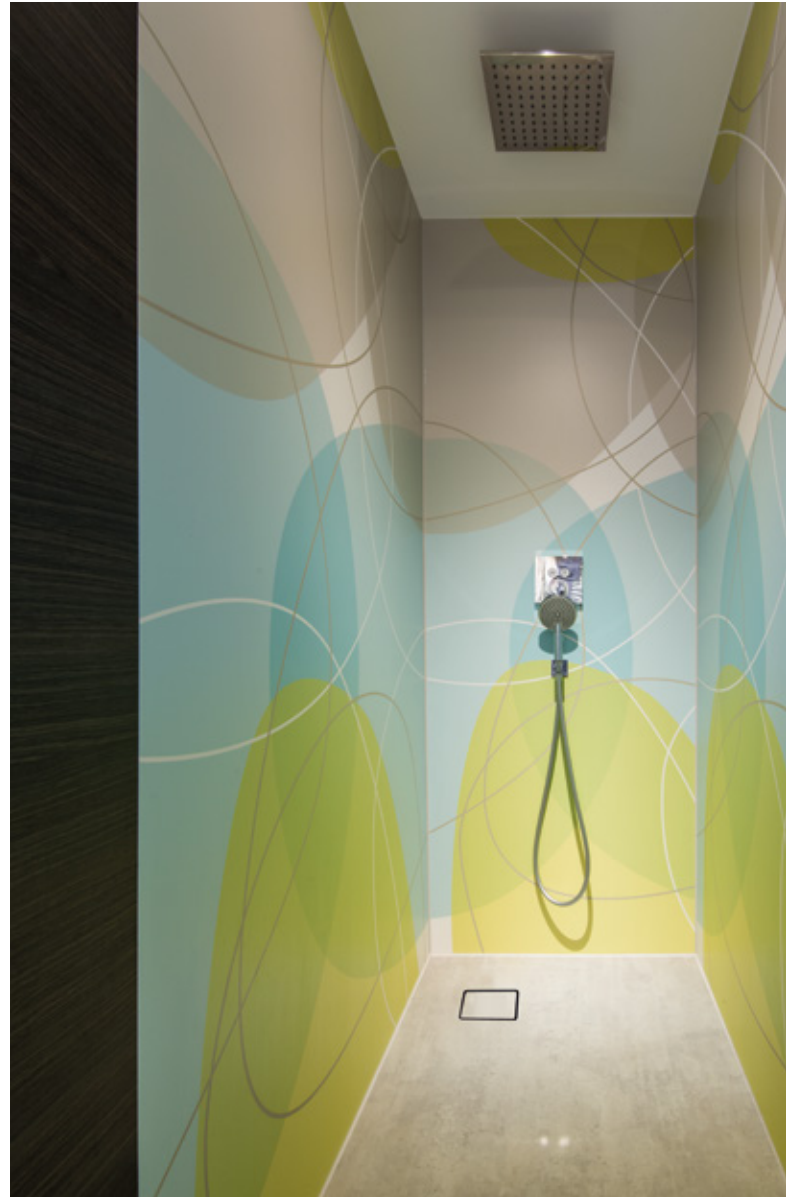
---



*A symphony of colours: residential bathroom with individually designed wall boards in the shower niche.*

*Photos: Christoph Hess Fotodesign, Darmstadt*

*Patterns: 4408-FW Milano Qwear, 4943-EM Empire Slate*



---

# PRODUCT SOLUTIONS FOR INTERIOR DESIGN

---

## RESOPAL SpaStyling® BOARD

- Highly robust RESOPAL® HPL surface: non-fading, scratch- and abrasion-proof
- Large-format, ultralight boards for designing walls with minimal joints
- Quick, clean processing with conventional tools, directly on-site without long disruption
- Can be worked like wood
- Stain-resistant, non-porous and thus absolutely hygienic and easy to clean
- Coordinated combinations of patterns and surfaces (see stock and complete collections on pages 19-21)

### TECHNICAL INFORMATION:

- Format: 3050 x 1320 x 7,8 mm
- Weight: 6 kg/m<sup>2</sup>
- Waterproof substrate





---

## RESOPAL SpaStyling® INDIVIDUAL DIGITAL PRINTING

Thanks to **RESOPAL** SpaStyling® individual printing, there are no limits to your creativity. Your own images can be transferred to **RESOPAL** wall boards using state-of-the-art screen and digital printing methods, for flexible design and unlimited variety in wet zones with **RESOPAL** SpaStyling®. Of course you can also select from our latest collections of digital prints. Available at [www.resopal.de](http://www.resopal.de).



For more information about digital printing  
and our collections, please visit:  
[www.resopal.de/produkte/hpl/individuell-de](http://www.resopal.de/produkte/hpl/individuell-de)

---

## RESOPAL SpaStyling®

### THE COMPLETE SYSTEM FOR BARRIER-FREE FLOOR DESIGN

---

## RESOPAL SpaStyling® FLOOR

- Extremely shock-resistant, compact material
- 100 % waterproof
- Non-slip surface structure
- Practically jointless thanks to patented high-strength installation system on all sides
- Seamless transition between **RESOPAL SpaStyling® Floor** and **RESOPAL SpaStyling® Shower Elements**
- Suitable for use with underfloor heating\*
- hardly inflammable, reaction to fire B<sub>fl</sub>-s1
- slip resistance R10/A

#### TECHNICAL INFORMATION:

- Format: 1245 x 200 x 5,4 mm
- Abrasion resistance AC5
- Shock-resistance IC4
- Performance class 33  
(commercial domain with heavy traffic)



*You won't be able to resist walking barefoot on these non-slip surfaces. The trendy material feels pleasantly dry and warm to the touch. The reliable solution for wet rooms.*

---

\* We do not recommend installation of RESOPAL SpaStyling with an electric underfloor heating system.



Thinking about tomorrow - today: **RESOPAL SpaStyling®** Shower Elements are the answer to the question of how to accommodate future phases of life and changing requirements in the bathroom.

---

## RESOPAL SpaStyling® SHOWER ELEMENTS

- EPS system board with surrounding integrated sealing tape and SLOPED **RESOPAL** surface
- Extremely shock-resistant, compact material
- Non-slip surface structure
- No silicone maintenance joint around the drain
- Covers for drains and channel drains in the matching pattern
- Central or off-center drain
- Drain horizontal or vertical
- Seamless transition between **RESOPAL SpaStyling®** Shower Elements and **RESOPAL SpaStyling®** Floor thanks to pattern match

### TECHNICAL INFORMATION:

- Format: max. 2000 x 1200 mm
- Element thickness: 45 - 55 mm
- Installation height: 45 - 131 mm



---

## RESOPAL SpaStyling® ACCESSORIES – COMPLETE SYSTEM FOR MORE RELIABILITY FOR INDIVIDUAL DESIGNS

RESOPAL SpaStyling® provides a complete system for more reliability and maximum comfort when redesigning bathrooms. Meticulously coordinated components ensure that installation is quick and clean.

---

### RESOPAL SpaStyling® MOULDING

- End, connection and corner moulding
- Material: polished aluminum

#### Technical information:

- Length: 3050 mm



---

### RESOPAL SpaStyling® ADHESIVE

#### Wall adhesive:

- Immediate initial bonding
- Board position can be corrected after applying
- Broad adhesion range

#### Floor adhesive:

- Strong adhesion
- Single-component hybrid polymer adhesive

#### Compound adhesive:

- Easy processing
- Excellent sealing properties
- Permanently elastic



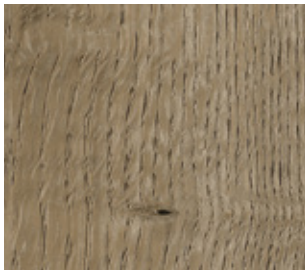
---

For more information about RESOPAL SpaStyling® Accessories, please visit [www.resopal.de/produkte/nassraum-elemente-de](http://www.resopal.de/produkte/nassraum-elemente-de). Please also refer to [www.resopal.de](http://www.resopal.de) and our Processing Instructions for more information about installing, handling and using RESOPAL SpaStyling®



## PATTERNS BOARD - STOCK COLLECTION

---



4080-EM Sunday Oak



4082-EM Tundra Oak



4118-EM Novara Elm



4134-EM Mississippi Pine



4148-EM Soil Wood



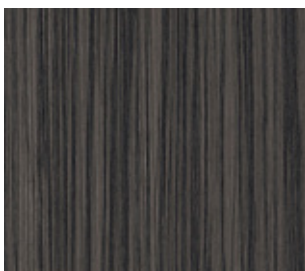
4161-WH Mystic Pine



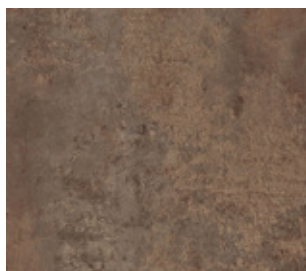
4164-EM Country Oak



4228-EM Silver Oak



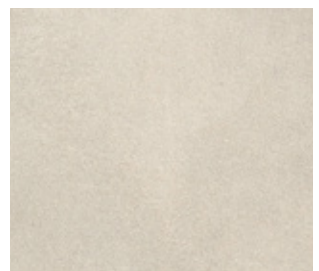
4490-WH Zebrano Nightfall



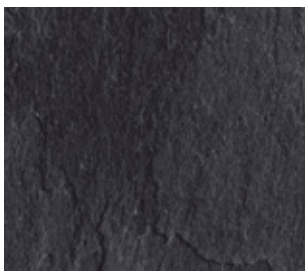
2493-60 Remington Mine



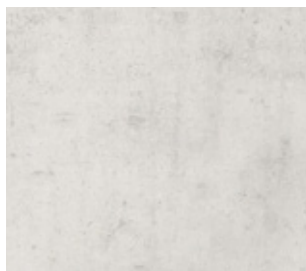
3509-60 Kerala Tanned



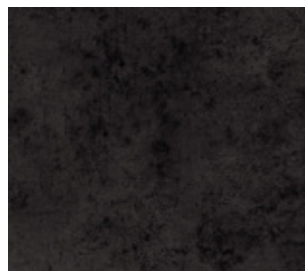
3514-RM Aragon Stone



3524-RM Colorado



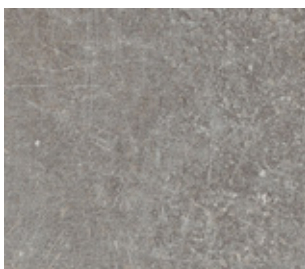
3562-RM Essential Wall



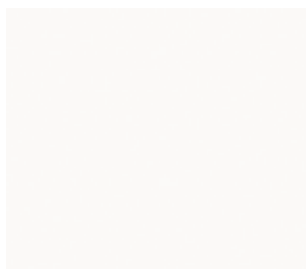
3563-RM Monocrete



3570-RM Marmo Bianco



4943-EM Empire Slate



9417-RM Snow White



1500N-RM Soft Grey



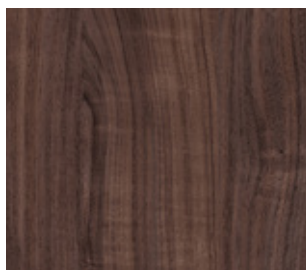
9429-HW Parrot

# PATTERNS BOARD - COMPLETE COLLECTION

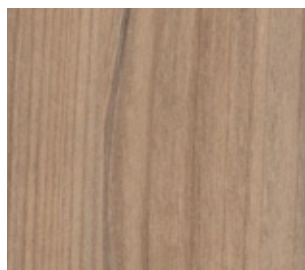
---



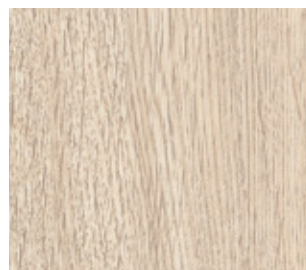
4005-WH Chalet Oak



4006-60 Noce Savinelli



4047-EM Lively Cherry



4055-EM Essential Large A



4067-60 Tallinn Ash



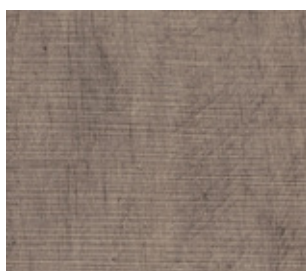
4069-60 Bergen Ash



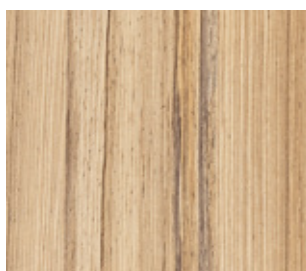
4081-EM Glen Oak



4183-EM Sugar Beech



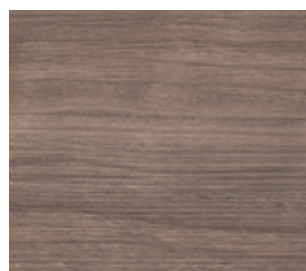
4289-FW Vintage Oak



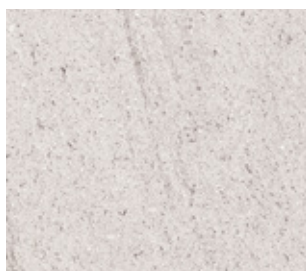
4393-60 Coco Bolo



4408-FW Milano Qwear



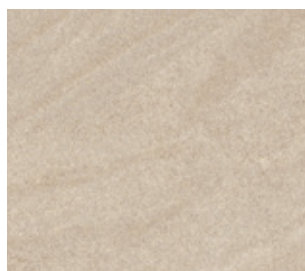
4463-FW Avian Cherry Qwear



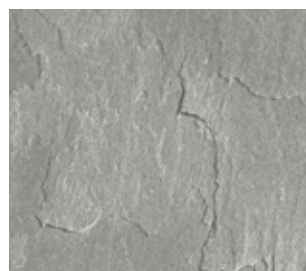
3431-XX Pearl Granite



3432-XX Silver Granite



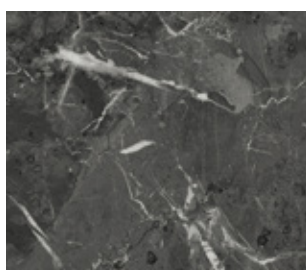
3510-EM Kerala



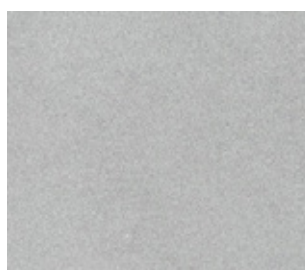
3523-RM Colorado Grey



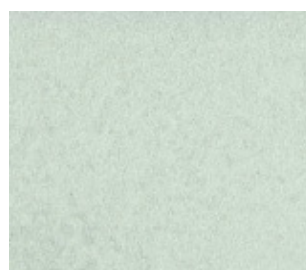
3576-HW Emperador



3577-HW Marmo Nero



3580-RM Aragon Grey



3710-HW Sanded Glass



# PATTERNS BOARD - COMPLETE COLLECTION



4915-RM Blue Steel



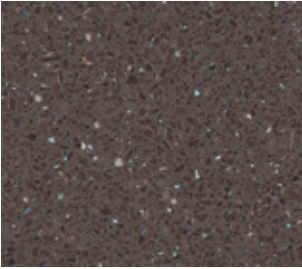
4918-RM Corroda



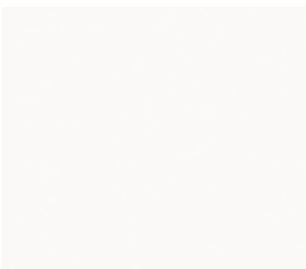
4919-90 Corroda Copper



3591-HW Fizzy White



3592-HW Fizzy Moon



9417 Snow White  
HW|PI|WG



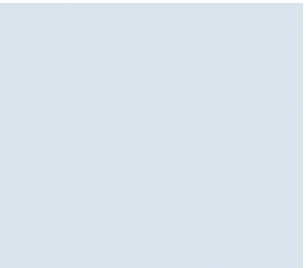
1500N Soft Grey  
HW|WG



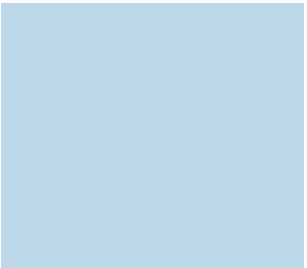
0531 Silica  
HW|RM|WG



D96 Shadow  
HW|RM|WG



D391 Cloud  
HW|RM|WG



0763 Ara  
HW|RM|WG



D414 Shogun  
HW|RM|WG



D378 Clear Teal  
HW|RM|WG



0617 Bergamot  
HW|RM|WG



9429 Parrot  
RM|WG



0665 Moss  
HW|RM|WG



D419 Lagoon  
HW|RM|WG

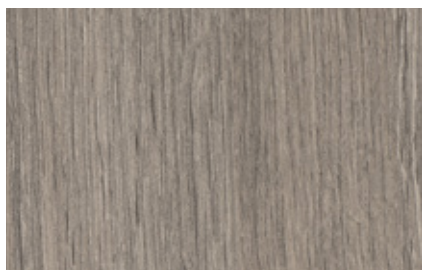


D14 Port  
HW|RM|WG



0901 Black  
HW|PI|RM|WG

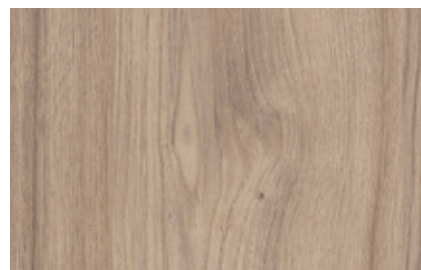
## PATTERNS FLOOR + SHOWER ELEMENTS



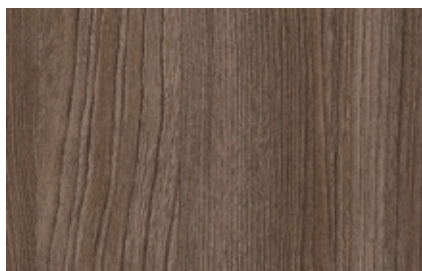
4228-FN Silver Oak



4164-FN Country Oak



4148-FN Soil Wood



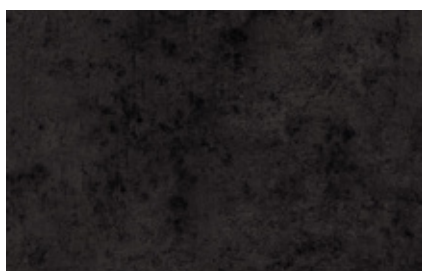
4118-FN Novara Elm



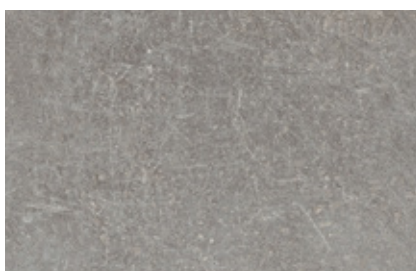
4134-FN Mississippi Pine



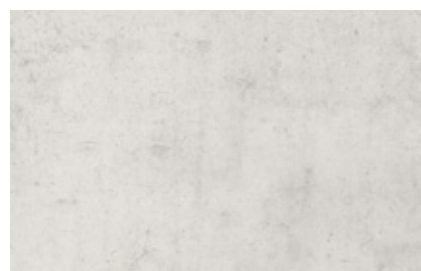
4161-FN Mystic Pine



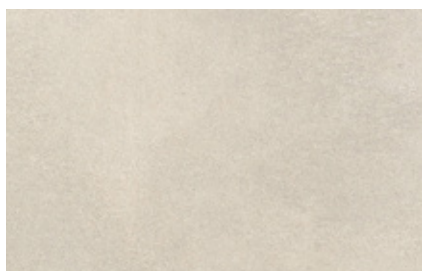
3563-FN Monocrete



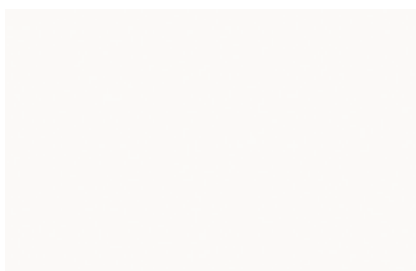
4943-FN Empire Slate



3562-FN Essential Wall



3514-FN Aragon Stone



9417-FN Snow White\*

\* = not available as floor

For further information about all patterns and our free sample  
dispatch, please visit [www.resopal.de](http://www.resopal.de)



# SURFACES

---



60 - Matte



90 - Slightly glossy



EM - Smooth-matte



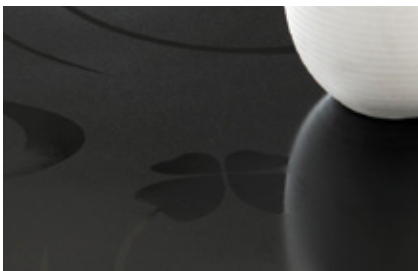
FN - Fine Line



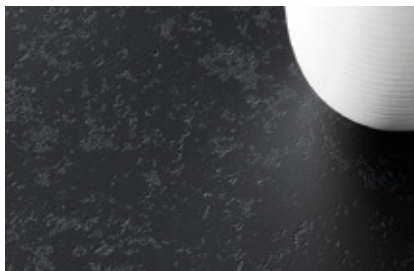
FW - Fresh Wood



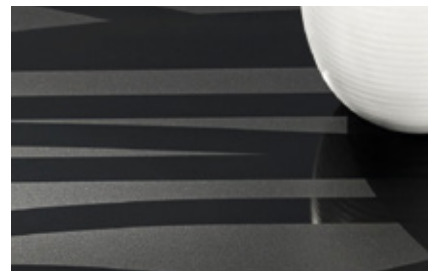
HW - High Wear



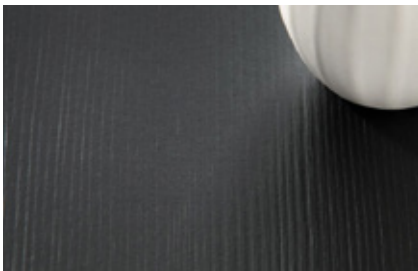
PI - Pure Identity



RM - Real Material



WG - Whispering Grass



WH - Wooden Heart



XX - Stone Mountain



For more information as well as photos of all surfaces,  
please visit [www.resopal.de](http://www.resopal.de)





Resopal GmbH  
Hans-Böckler-Straße 4  
64823 Groß-Umstadt | Germany

Tel.: +49 (0) 6078 80 0  
Email: [info@resopal.de](mailto:info@resopal.de)  
[www.resopal.de](http://www.resopal.de)